



FOR IMMEDIATE RELEASE #5:

WHITE ROCK LAKE FIRE

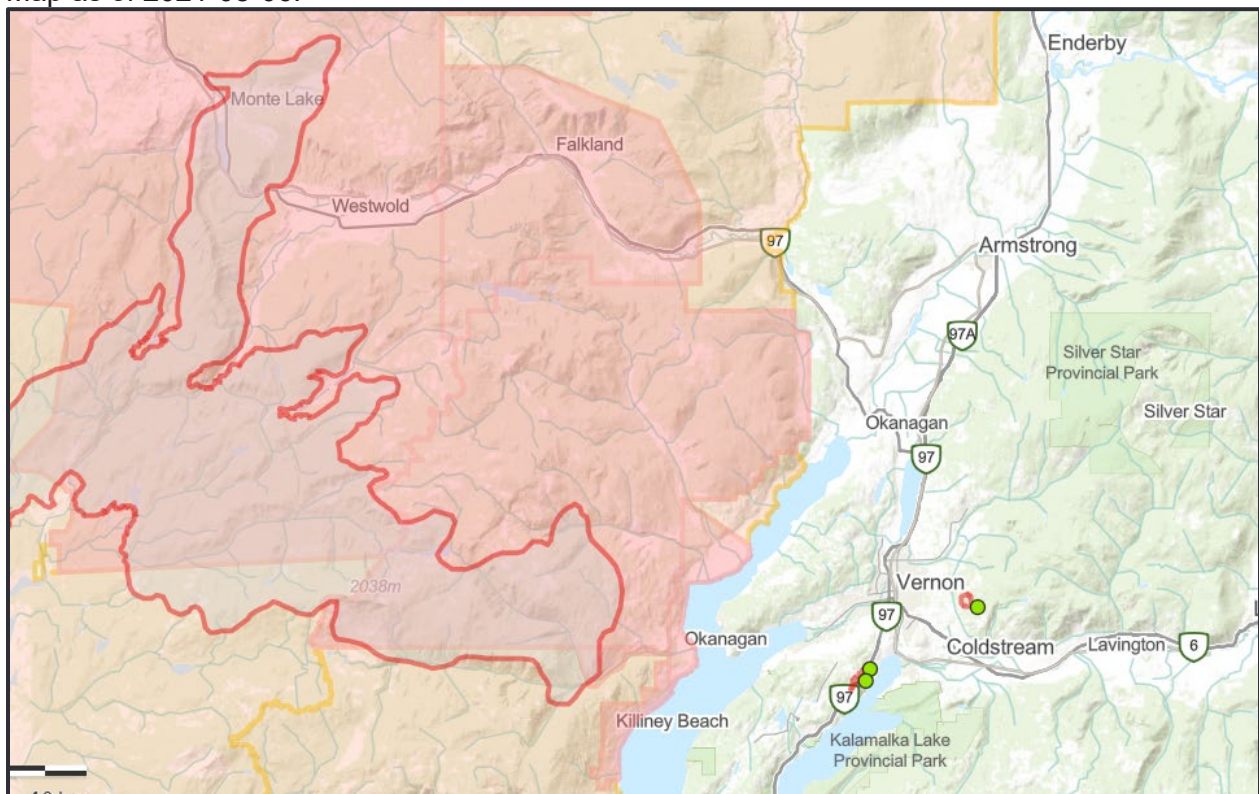
Friday , August 6, 2021 – 14:15 Hours
Spallumcheen, BC

LOCAL WILDFIRE – WHITE ROCK LAKE WILDFIRE (K61884)

The Township of Spallumcheen and the Armstrong Spallumcheen Fire Department continue to monitor the wildfire located west of the Township identified as the [White Rock Lake Fire under BC Wildfire # K61884](#). We are closely working with BC Wildfire Service and Emergency Management BC regarding this fire and are assessing the need for possible evacuation alerts within Spallumcheen. The current alert area is **not** within the Township. We are asking all residents to be proactive as this fire nears our borders and have all required planning in place in the event we are issued an alert from BC Wildfire. Further updates regarding the wildfire and possible evacuations within Spallumcheen will be provided at 17:00 hrs.

The Township of Spallumcheen encourages our residents and visitors to be vigilant, prepared, and remain safe as we navigate through this challenging wildfire season. Ensure that your family has an emergency plan in place, check for local alerts and orders if you plan to travel and watch for updates on the [Township website under News and Events](#), on local media, and through [BC Wildfire](#).

Map as of 2021-08-06:

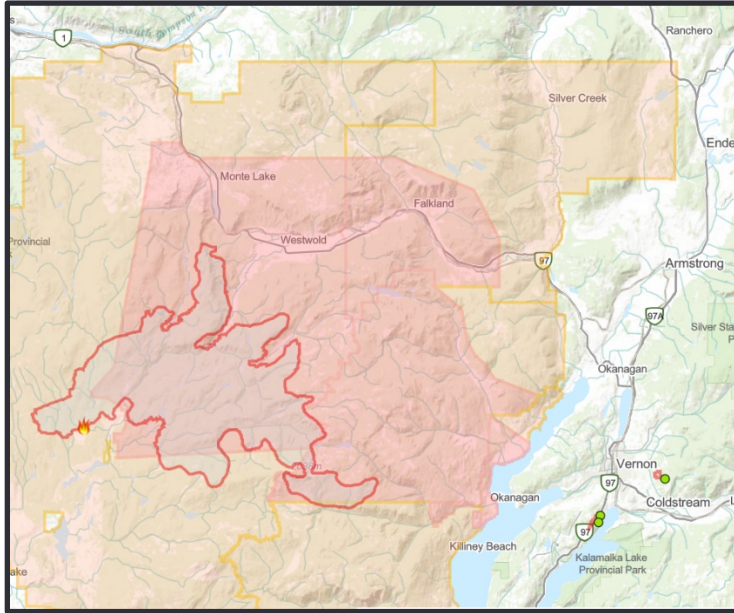


If you need help preparing an emergency plan, [Prepared BC website](#) has many resources to help you get your home and family ready for an emergency situation.

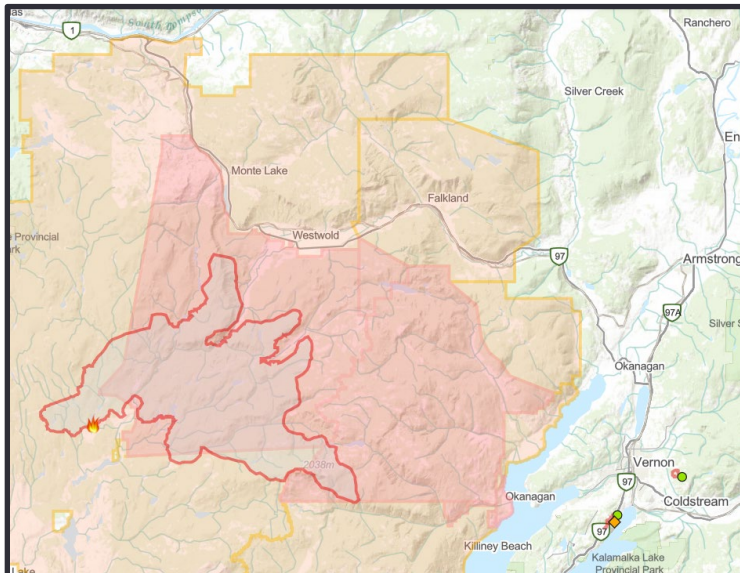
Updates will be issued by the Township as conditions related to this fire change. For more information regarding this release, please contact the Township office via email at mail@spallumcheentwp.bc.ca on the weekend and via email or phone at 250-546-3013 Monday through Friday 8:30 am to 4:30 pm.

Previous maps

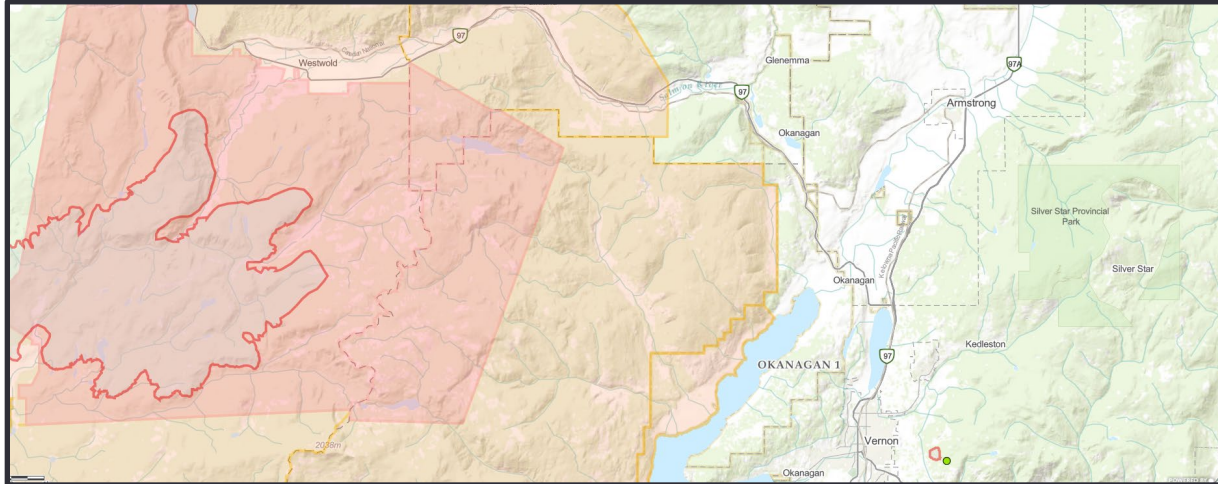
2021-08-05



2021-08-03



2021-08-01



-30-

Media Contact:

Cindy Graves, Corporate Officer
Township of Spallumcheen
mail@spallumcheentwp.bc.ca
www.spallumcheentwp.bc.ca
250.546.3013