



## FOR IMMEDIATE RELEASE # 56

### WHITE ROCK LAKE FIRE – WILDFIRE UPDATE

Friday, August 27, 2021 – 12:00 Hours  
Spallumcheen, BC

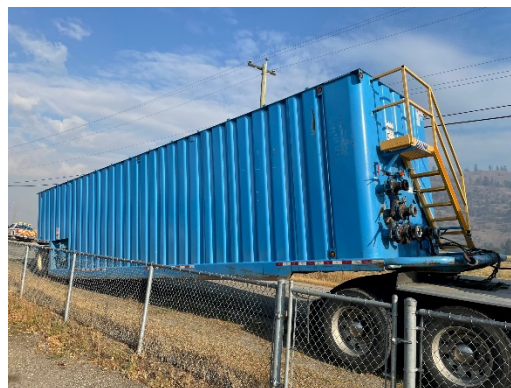
---

#### LOCAL WILDFIRE – WHITE ROCK LAKE WILDFIRE (K61884)

BC Wildfire has a 3,000 ha planned ignition scheduled for later this week. **Please note that you will likely see significant smoke when this planned ignition begins.** With the significant smoke in the atmosphere, air quality may be a concern. We ask you to monitor air quality in the North Okanagan and plan your activities accordingly. [Air Quality updates are available at the Environment Canada website.](#) The Township will continue to do our best to update you on information about any planned ignitions as the information becomes available.

BC Wildfire has indicated White Rock Lake fire is consuming deep burning fuels which are persistent throughout the east flank of the fire. Deep burning fuels make it extremely difficult to bring a fire to full extinguishment. As such they have advised that the planned ignitions are the most favourable tactic to gain control while also maintaining an appropriate safety margin for firefighters.

As part of the preparation work for this planned ignition, BC Wildfire in conjunction with our Armstrong Spallumcheen Fire Department have been placing large blue containers in strategic locations of Spallumcheen. Each container holds 21,000 gallons of water and will be used by structural protection crews should it be necessary. **This is a precautionary measure only.** There are currently no indicators that the fire is set to enter Spallumcheen's borders. You may see increased fire truck activity on the road today as they work with BC Wildfire structure protection crews to identify and place these containers in the best locations.



Some of the things that residents can do are:

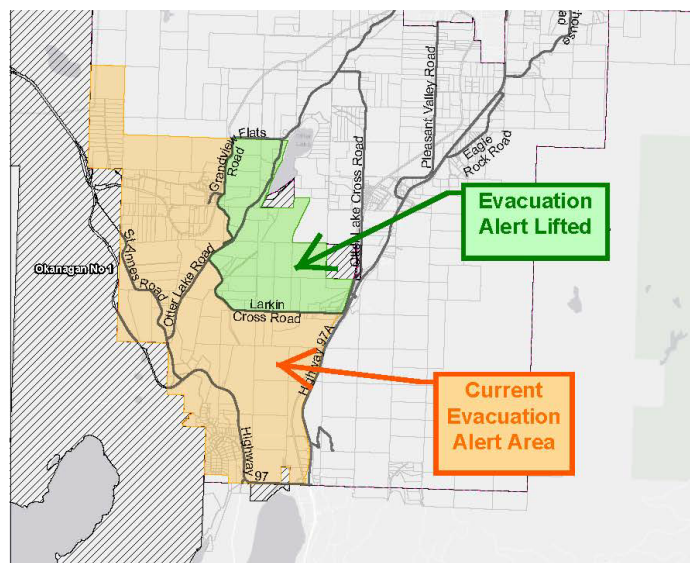
- Avoid use of back country areas. The Township asks that everyone stay alert to signs of fire and report any signs of wildfire in back country areas to 1-800-663-5555 or \*5555 from a cell phone.
- Make sure that you are prepared for quickly changing situations by having an emergency plan and be prepared to leave your home or business with short notice. If you have not already done so, please review resources on our [Emergency Information page](#) regarding what to do to prepare for an evacuation and what to pack in your 72 hour grab and go bag.

**The current evacuation alert area for the Township of Spallumcheen is located below:**

### EVACUATION ALERT AREA IN EFFECT

- Corkscrew Rd
- Evans Rd
- Golfview Place
- Grandview Flats Rd (south side)
- Grandview Flats Rd North
- Grandview Flats Rd South
- 9221 to 9728 Highway 97
- L&A Cross Rd
- Larkin Cross Rd (south side)
- Mendenhall Rd
- Miller Rd
- Northwind Drive
- 8400 Old Kamloops Rd
- Otter Lake Rd (632 Otter Lake Rd and lower)
- Overlook Pl
- Page Rd
- Pine Ridge Rd
- Round lake Rd
- St Anne's Rd
- Stepping Stones Rd
- Stepping Stones Cres

Please refer to mapping below and the interactive mapping on our website for clarification on your specific address.



Please monitor the [Township of Spallumcheen website](#), [BC Wildfire website](#) and [DriveBC](#) for updates on alerts, orders, wildfire changes and road closures.

Residents that are under Evacuation Alert are encouraged to register online at <https://ess.gov.bc.ca>. By registering online, residents will save considerable time and effort should you need to access Emergency Social Services.

When making plans to prepare for possible evacuations, remember that Okanagan hotels currently have limited availability. If possible, make plans to stay with family and friends, who are not located in an evacuation alert or order area.

**The next scheduled update for the Township of Spallumcheen is on Friday, August 27, 2021 at 16:00 hrs.**

-30-

**Media Contact:**

Lisa Gyorkos, Deputy Corporate Officer, Township of Spallumcheen  
[mail@spallumcheentwp.bc.ca](mailto:mail@spallumcheentwp.bc.ca)  
[www.spallumcheentwp.bc.ca](http://www.spallumcheentwp.bc.ca)  
250.546.3013